

GPRS/EDGE Configuration for Laptop/PC through Nokia PC Suit

AFGHAN WIRELESS

Click Start > Program Menu> Open 'Nokia PC Suite Application'



Select 'Connect to the Internet'



Select 'Settings'



One Touch Access Wizard

Select modem

Please select a modem from the list. This modem will be used when connecting to the network.

Nokia 5300 USB Modem

Select 'Handset model'

If you cannot see your modem in the list, make sure you have installed it properly. Refer to help for more information.

Select 'Next'

Help

< Back

Next >

Cancel

NOKIA



One Touch Access Wizard

Select network operator



Select your network operator from the list.

Configure the connection manually

Use this option if you cannot find your network operator from the list or if the preconfigured settings do not seem to work.

Select 'Configure the Connection manually'

Select 'Next'

Help

< Back Next > Cancel



One Touch Access Wizard

Configure the connection manually

Please fill in the following settings. You can get these settings from your network operator.

Access point:

Username:

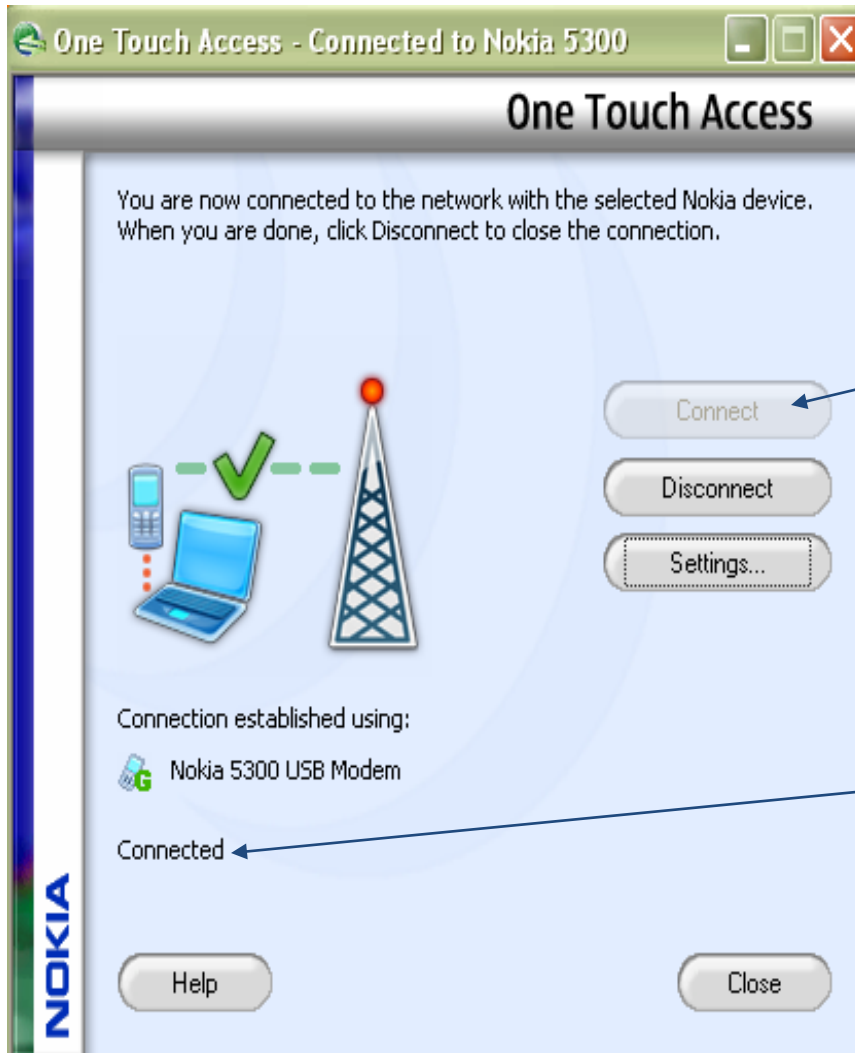
Password:

Additional initialisation commands:

Enter APN "INTERNET"

Select 'Finish'





Select
'Connect'

Now GPRS connected